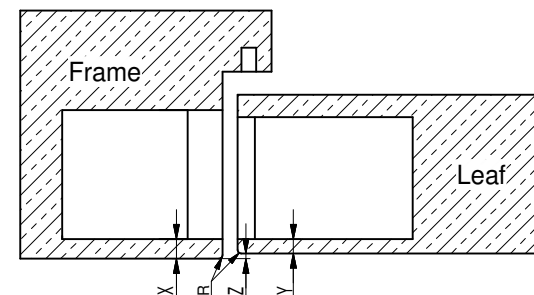
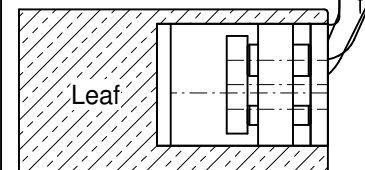
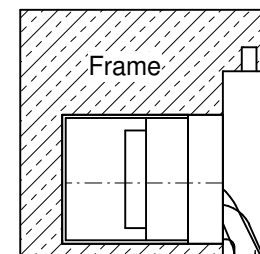
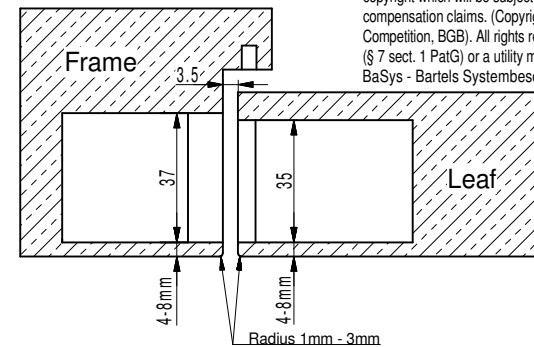
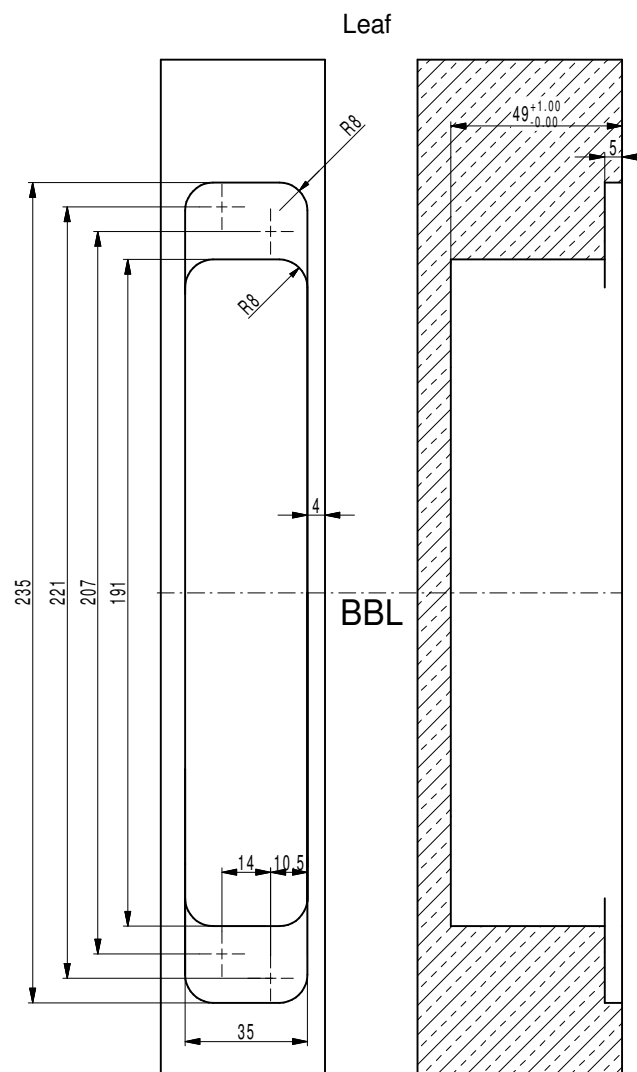
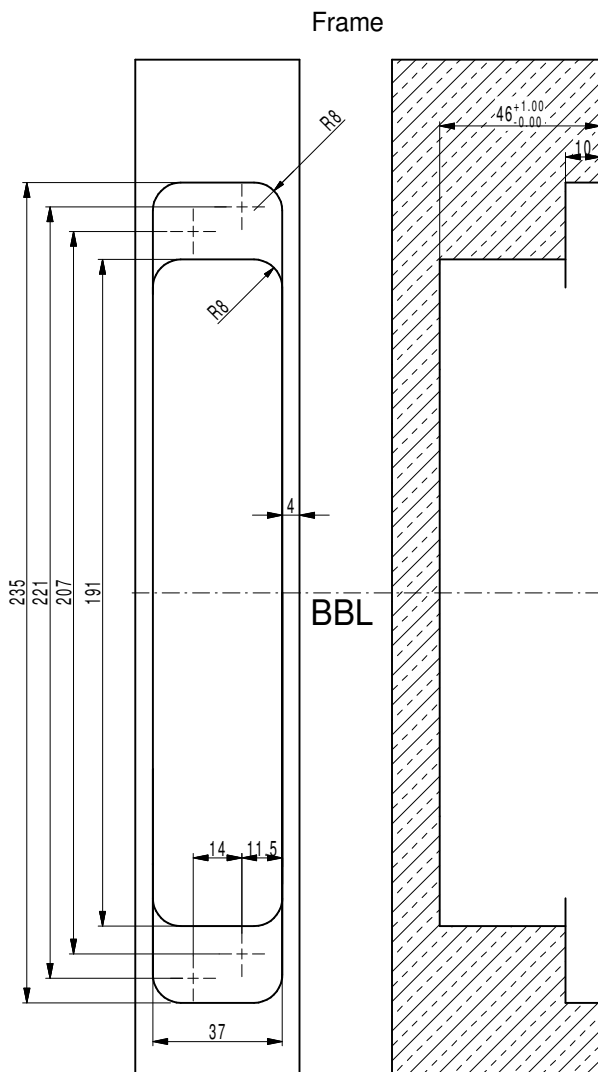


This drawing is our property. Any duplication, use or distribution to third parties is strictly prohibited and constitutes an infringement of copyright which will be subject to legal proceedings and compensation claims. (Copyright Law, Act against Unfair Competition, BGB). All rights reserved in case of a patent issue (§ 7 sect. 1 PatG) or a utility model protection (§ 5 sect.4 GebrMG).
BaSys - Bartels Systembeschläge GmbH



Cutout ratio

| Frame (X) | Leaf (Y) | Distance (Z) | Radius (R) |
|---|----------|--------------|------------|
| 4 mm | 4 mm | -1 mm | 0 mm |
| Free choice of intermediate sizes up max. | | | |
| 8 mm | 8 mm | -1 mm | 3 mm |

Please note that the cut-out ratios become more unfavourable downward in the table with the effect of reducing the adjustability of the hinge.
Ideal case: door recess 4 mm, frame recess also 4 mm (grayed out).
A big radius at the door and frame is recommendable.

| Maße in mm | | A3-Format | |
|------------|----------|-----------|-------------------|
| Material | | | |
| 2005 | Date | Name | |
| drawn | 19.09. | Glück | |
| checked | - | - | |
| Std. | - | - | |
| No. | Revision | Date | Name |
| | | | File 03797900.PRT |

BaSys Bartels Systembeschläge GmbH
D-32689 Kalletal-Hohenhausen
Gewerbegebiet Echternhagen 2
Telefon 05264/6473-0
Telefax 05264/6473-30

Title
Cutout drawing - Concealed Hinge DX 120/180 3-D

Drawing-No. _ Scale 1:1